

TOURIST ACCOMMODATION

TASMANIA

EMBARGOED UNTIL 11:30AM MON 25 SEPTEMBER 1995

JUNE QTR KEY FIGURES

	Jun 94	Jun 95	change
Hotels, Motels and Guest Houses			
Rooms available (No.)	5 322	5 408	1.6 %
Room occupancy rate (%)	51.2	48.4	-2.8 pts
Takings from accommodation (\$'000)	17 799	17 954	0.9 %
Holiday Flats, Units and Houses			
Units, etc. available (No.)	793	830	4.7 %
Unit occupancy rate (%)	49.8	43.6	-6.2 pts
Takings from accommodation (\$'000)	2 455	2 343	-4.6 %
Caravan Parks			
Sites, cabins, etc. available (No.)	6 708	6 625	-1.2 %
Site occupancy rate (%)	28.1	30.3	2.2 pts
Takings from accommodation (\$'000)	1 435	1 523	6.1 %
Visitor Hostels			
Bed spaces available (No.)	1 450	1 748	20.6 %
Bed occupancy rate (%)	11.5	12.8	1.3 pts
Takings from accommodation (\$'000)	175	226	29.1 %

JUNE QTR KEY POINTS

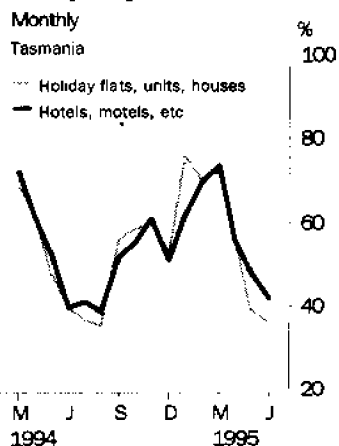
HOTELS, MOTELS AND GUEST HOUSES

- Capacity available in hotels, motels and guest houses increased over the year by 1.6% to 5,408 rooms.
- At the same time, however, demand in the June quarter 1995 fell by 3.9% in terms of room nights occupied, resulting in a fall in the room occupancy rate from 51.2% to 48.4%.
- While demand was down, takings from accommodation were up by 0.9% to \$18.0m, owing to an increase in average takings per room night occupied from \$72 to \$75. Hotel, motel and guest house establishments accounted for just over 81% of takings by all establishment types in the Accommodation Survey.

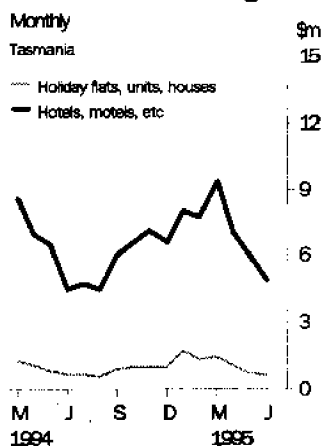
VISITOR HOSTELS

- Capacity available in visitor hostels increased by 20.6% to 1,748 bed spaces, with the addition of a net 6 new establishments during the year to June 1995. Demand, in terms of guest nights, rose by a larger proportion (34.0%), resulting in an increase in the bed occupancy rate from 11.5% to 12.8%.
- Whilst visitor hostels have shown large increases in capacity and demand, it should be noted that these establishments account for just over 1% of accommodation takings by all establishment types in the Survey.

Occupancy rates



Accommodation takings



INQUIRIES

- For further information about these and related statistics, contact Richard Bellchambers on 07 3222 6152, or any ABS Office.

NOTES

FORTHCOMING ISSUES

ISSUE (Quarter)

EXPECTED RELEASE DATE

September 1995

20 December 1995

CHANGES IN THIS ISSUE

The format of this issue has been revised in accordance with changes in ABS publication standards. In addition, the ordering of tables from Table 5 onwards has been changed.

DENIS W. ROGERS

ACTING DEPUTY COMMONWEALTH STATISTICIAN

TABLE 1 — SUMMARY OF HOTELS, MOTELS AND GUEST HOUSES WITH FACILITIES, TASMANIA (a)

Particulars	Unit	Quarter ended				Year ended			
		March 1994	June 1994	September 1994	December 1994	March 1995	June 1995	June 1994	June 1995
LICENSED HOTELS WITH FACILITIES									
Establishments	No.	92	91	91	92	91	92
Guest rooms	No.	3,489	3,488	3,513	3,526	3,511	3,545
Bed spaces	No.	9,993	9,961	9,856	9,921	9,908	9,932
Employment (persons)	No.	3,587	3,468	3,474	3,576	3,500	3,403
Room nights occupied	No.	205,931	163,803	145,246	177,580	209,797	157,516	673,330	690,139
Room occupancy rate	per cent	65.6	51.6	45.0	54.9	66.4	48.8	53.1	53.7
Guest nights	No.	370,707	263,797	239,577	302,266	367,621	261,030	1,134,600	1,170,494
Bed occupancy rate	per cent	41.2	29.1	26.4	33.2	41.2	28.9	31.2	32.4
Guest arrivals	No.	201,600	143,788	125,155	170,077	204,917	139,779	611,035	639,928
Average length of stay	days	1.8	1.8	1.9	1.8	1.8	1.9	1.9	1.8
Takings from accommodation	\$'000	15,769	12,660	11,109	14,188	16,898	12,719	51,296	54,914
MOTELS AND GUEST HOUSES WITH FACILITIES									
Establishments	No.	86	86	83	85	86	87
Guest rooms	No.	1,845	1,834	1,803	1,828	1,869	1,863
Bed spaces	No.	5,665	5,617	5,550	5,674	5,780	5,767
Employment (persons)	No.	754	751	747	815	856	749
Room nights occupied	No.	112,094	83,937	67,209	94,786	120,509	80,573	344,095	363,077
Room occupancy rate	per cent	67.5	50.4	40.6	56.4	71.6	47.6	51.3	54.1
Guest nights	No.	219,215	152,442	122,573	175,667	235,646	148,175	633,495	682,061
Bed occupancy rate	per cent	43.0	29.9	24.0	33.7	45.3	28.3	30.7	32.8
Guest arrivals	No.	121,933	86,979	69,307	105,336	135,180	89,147	358,517	398,970
Average length of stay	days	1.8	1.8	1.8	1.7	1.7	1.7	1.8	1.7
Takings from accommodation	\$'000	7,044	5,139	4,120	5,971	8,064	5,235	20,854	23,390
TOTAL HOTELS, MOTELS AND GUEST HOUSES WITH FACILITIES									
Establishments	No.	178	177	174	177	177	179
Guest rooms	No.	5,334	5,322	5,316	5,354	5,380	5,408
Bed spaces	No.	15,658	15,578	15,406	15,595	15,688	15,699
Employment (persons)	No.	4,341	4,219	4,221	4,391	4,356	4,152
Room nights occupied	No.	318,025	247,740	212,455	272,366	330,306	238,089	1,017,425	1,053,216
Room occupancy rate	per cent	66.2	51.2	43.5	55.4	68.2	48.4	52.5	53.8
Guest nights	No.	589,922	416,239	362,150	477,933	603,267	409,205	1,768,095	1,852,555
Bed occupancy rate	per cent	41.9	29.4	25.6	33.3	42.7	28.7	31.0	32.6
Guest arrivals	No.	323,533	230,767	194,462	275,413	340,097	228,926	969,552	1,038,898
Average length of stay	days	1.8	1.8	1.9	1.7	1.8	1.8	1.8	1.8
Takings from accommodation	\$'000	22,812	17,799	15,229	20,159	24,963	17,954	72,149	78,304

(a) From December quarter 1993, establishments with fewer than 5 rooms have been formally excluded from the scope of this collection.

TABLE 2 — SUMMARY OF CARAVAN PARKS, TASMANIA

Particulars	Unit	Quarter ended				Year ended			
		March 1994	June 1994	September 1994	December 1994	March 1995	June 1995	June 1994	June 1995
SHORT-TERM CARAVAN PARKS									
Establishments	No.	58	58	63	63	63	63
Capacity									
On-site vans	No.	284	284	269	276	272	273
Other powered sites	No.	2,943	2,977	3,085	3,095	3,090	3,101
Unpowered sites	No.	2,197	2,201	2,276	2,266	2,175	1,932
Cabins, etc.	No.	315	319	347	362	338	362
<i>Total capacity</i>	<i>No.</i>	<i>5,739</i>	<i>5,781</i>	<i>5,977</i>	<i>5,999</i>	<i>5,875</i>	<i>5,668</i>
Sites occupied by long-term guests	No.	212	229	260	273	280	269
Other sites permanently reserved	No.	858	944	979	986	1,021	1,018
Employment (persons)	No.	184	175	195	219	227	198
Site nights occupied	No.	186,782	147,146	140,206	169,002	211,504	156,710	602,610	677,422
Site occupancy rate	per cent	36.2	28.0	25.5	30.6	40.0	30.4	29.8	31.6
Takings from accommodation	\$'000	2,120	1,091	819	1,505	2,471	1,237	5,031	6,031
LONG-TERM CARAVAN PARKS									
Establishments	No.	12	12	12	12	12	12
Capacity									
On-site vans	No.	120	117	116	112	121	118
Other powered sites	No.	519	489	500	508	507	504
Unpowered sites	No.	240	225	236	238	233	233
Cabins, etc.	No.	97	96	95	96	98	102
<i>Total capacity</i>	<i>No.</i>	<i>976</i>	<i>927</i>	<i>947</i>	<i>954</i>	<i>959</i>	<i>957</i>
Sites occupied by long-term guests	No.	190	178	184	188	190	183
Other sites permanently reserved	No.	16	12	21	20	17	17
Employment (persons)	No.	43	44	37	47	43	40
Site nights occupied	No.	33,447	24,612	23,989	25,738	29,840	26,124	116,009	105,691
Site occupancy rate	per cent	38.1	29.2	27.5	29.3	34.6	30.0	31.5	30.3
Takings from accommodation	\$'000	475	344	217	313	416	286	1,584	1,232
TOTAL CARAVAN PARKS									
Establishments	No.	70	70	75	75	75	75
Capacity									
On-site vans	No.	404	401	385	388	393	391
Other powered sites	No.	3,462	3,466	3,585	3,603	3,597	3,605
Unpowered sites	No.	2,437	2,426	2,512	2,504	2,408	2,165
Cabins, etc.	No.	412	415	442	458	436	464
<i>Total capacity</i>	<i>No.</i>	<i>6,715</i>	<i>6,708</i>	<i>6,924</i>	<i>6,953</i>	<i>6,834</i>	<i>6,625</i>
Sites occupied by long-term guests	No.	402	407	444	461	470	452
Other sites permanently reserved	No.	874	956	1,000	1,006	1,038	1,035
Employment (persons)	No.	227	219	232	266	270	238
Site nights occupied	No.	220,229	171,758	164,195	194,740	241,344	182,834	718,619	783,113
Site occupancy rate	per cent	36.4	28.1	25.8	30.4	39.2	30.3	30.0	31.4
Takings from accommodation	\$'000	2,595	1,435	1,036	1,818	2,886	1,523	6,615	7,263

TABLE 3 — SUMMARY OF HOLIDAY FLATS, UNITS AND HOUSES, TASMANIA

Particulars	Unit	Quarter ended				Year ended			
		March 1994	June 1994	September 1994	December 1994	March 1995	June 1995	June 1994	June 1995
Letting entities	No.	53	52	53	52	55	54
Flats, units and houses									
Single bedroom	No.	265	260	264	265	272	230
Multiple bedroom	No.	532	533	540	551	595	600
Total flats, units and houses	No.	797	793	804	816	867	830
Bed spaces	No.	3,511	3,486	3,533	3,578	3,761	3,677
Employment (persons)	No.	338	313	305	339	382	295
Unit nights occupied	No.	50,280	35,926	31,286	42,775	56,752	32,897	152,242	163,710
Unit occupancy rate	per cent	70.1	49.8	42.5	57.0	72.7	43.6	54.1	54.2
Unit lettings	No.	23,307	16,928	14,542	21,186	26,177	15,872	70,624	77,777
Average length of stay	days	2.2	2.1	2.2	2.0	2.2	2.1	2.2	2.1
Takings from accommodation	\$'000	3,725	2,455	2,044	3,036	4,391	2,343	10,324	11,815

TABLE 4 — SUMMARY OF VISITOR HOSTELS, TASMANIA

Particulars	Unit	Quarter ended				Year ended			
		March 1994	June 1994	September 1994	December 1994	March 1995	June 1995	June 1994	June 1995
Establishments	No.	39	36	41	44	43	42
Bed spaces	No.	1,487	1,450	1,712	1,813	1,786	1,748
Employment (persons)	No.	108	90	95	112	115	113
Guest nights	No.	35,706	15,114	12,399	28,376	46,606	20,257	78,043	107,638
Bed occupancy rate	per cent	26.7	11.5	8.0	17.1	29.0	12.8	14.7	16.8
Guest arrivals	No.	24,992	9,441	7,518	17,106	28,328	12,733	53,305	65,685
Average length of stay	days	1.4	1.6	1.6	1.7	1.6	1.6	1.5	1.6
Takings from accommodation	\$'000	406	175	145	377	547	226	884	1,295

TABLE 5—HOTELS, MOTELS AND GUEST HOUSES WITH FACILITIES BY STAR GRADING, TASMANIA

Particulars	Licensed hotels with facilities	Motels and guest houses	Star grading			Total
			1, 2 and Ungraded	3	4 and 5	
ESTABLISHMENTS, CAPACITY AND EMPLOYMENT						
<i>June quarter 1994—</i>						
Establishments	91	86	73	82	22	177
Guest rooms	3,488	1,834	1,335	2,541	1,446	5,322
Bed spaces	9,961	5,617	3,774	7,710	4,094	15,578
Employment (persons)	3,468	751	904	1,324	1,991	4,219
<i>June quarter 1995—</i>						
Establishments	92	87	66	86	27	179
Guest rooms	3,545	1,863	1,204	2,663	1,541	5,408
Bed spaces	9,932	5,767	3,380	7,925	4,394	15,699
Employment (persons)	3,403	749	828	1,389	1,935	4,152
ROOM NIGHTS OCCUPIED						
<i>June quarter 1994</i>	163,803	83,937	47,812	114,282	85,646	247,740
<i>1995—</i>						
April	57,889	32,328	15,214	43,560	31,443	90,217
May	53,431	27,017	12,944	37,134	30,370	80,448
June	46,196	21,228	10,743	29,250	27,431	67,424
<i>June quarter 1995</i>	157,516	80,573	38,901	109,944	89,244	238,089
ROOM OCCUPANCY RATES (per cent)						
<i>June quarter 1994</i>	51.6	50.4	39.4	49.5	65.1	51.2
<i>1995—</i>						
April	54.4	57.8	42.1	54.5	68.0	55.6
May	48.6	46.8	34.7	45.0	63.6	48.0
June	43.4	38.1	29.9	36.6	59.3	41.6
<i>June quarter 1995</i>	48.8	47.6	35.6	45.4	63.6	48.4
GUEST NIGHTS						
<i>June quarter 1994</i>	263,797	152,442	87,295	204,345	124,599	416,239
<i>1995—</i>						
April	102,799	62,927	28,907	83,390	53,429	165,726
May	83,542	46,602	21,292	62,764	46,088	130,144
June	74,689	38,646	18,146	52,666	42,523	113,335
<i>June quarter 1995</i>	261,030	148,175	68,345	198,820	142,040	409,205
BED OCCUPANCY RATES (per cent)						
<i>June quarter 1994</i>	29.1	29.9	25.4	29.1	33.4	29.4
<i>1995—</i>						
April	34.5	36.4	28.5	35.1	40.5	35.2
May	27.1	26.1	20.3	25.5	33.8	26.7
June	25.1	22.4	18.0	22.2	32.3	24.1
<i>June quarter 1995</i>	28.9	28.3	22.2	27.6	35.5	28.7
GUEST ARRIVALS						
<i>June quarter 1994</i>	143,788	86,979	53,229	118,174	59,364	230,767
<i>1995—</i>						
April	56,557	38,164	19,537	51,057	24,127	94,721
May	44,468	27,975	13,485	37,621	21,337	72,443
June	38,754	23,008	10,802	31,399	19,561	61,762
<i>June quarter 1995</i>	139,779	89,147	43,824	120,077	65,025	228,926
AVERAGE LENGTH OF STAY (days)						
<i>June quarter 1994</i>	1.8	1.8	1.6	1.7	2.1	1.8
<i>June quarter 1995</i>	1.9	1.7	1.6	1.7	2.2	1.8
TAKINGS FROM ACCOMMODATION (\$'000)						
<i>June quarter 1994</i>	12,660	5,139	2,723	6,877	8,199	17,799
<i>1995—</i>						
April	4,856	2,172	1,027	2,770	3,231	7,028
May	4,331	1,725	763	2,237	3,057	6,056
June	3,532	1,338	617	1,753	2,500	4,870
<i>June quarter 1995</i>	12,719	5,235	2,407	6,759	8,787	17,954

TABLE 6 — HOTELS, MOTELS AND GUEST HOUSES WITH FACILITIES BY ESTABLISHMENT SIZE, TASMANIA

Particulars	Establishment size (No. of rooms)						Total
	5-9	10-15	16-25	26-50	51-100	101+	
ESTABLISHMENTS, CAPACITY AND EMPLOYMENT							
<i>June quarter 1994—</i>							
Establishments	43	27	32	49	18	8	177
Guest rooms	299	304	659	1,669	1,142	1,249	5,322
Bed spaces	763	824	1,930	4,973	3,648	3,440	15,578
Employment (persons)	253	321	383	928	540	1,794	4,219
<i>June quarter 1995</i>							
Establishments	43	29	30	50	19	8	179
Guest rooms	305	331	613	1,701	1,210	1,248	5,408
Bed spaces	779	905	1,737	5,123	3,729	3,426	15,699
Employment (persons)	223	299	379	947	617	1,687	4,152
ROOM NIGHTS OCCUPIED							
<i>June quarter 1994</i>	11,049	12,458	23,467	77,263	52,542	70,961	247,740
<i>1995—</i>							
April	4,157	4,732	8,853	27,800	19,766	24,909	90,217
May	3,616	3,986	7,734	25,766	15,133	24,213	80,448
June	3,058	3,330	6,370	20,075	12,747	21,844	67,424
<i>June quarter 1995</i>	10,831	12,048	22,957	73,641	47,646	70,966	238,089
ROOM OCCUPANCY RATES (per cent)							
<i>June quarter 1994</i>	41.0	45.0	39.1	50.9	50.6	62.4	51.2
<i>1995—</i>							
April	45.4	47.7	48.1	54.5	54.5	66.5	55.6
May	38.2	38.8	40.7	48.9	40.3	62.6	48.0
June	34.0	33.5	34.6	39.3	35.1	58.3	41.6
<i>June quarter 1995</i>	39.2	40.0	41.2	47.6	43.3	62.5	48.4
GUEST NIGHTS							
<i>June quarter 1994</i>	17,738	20,877	41,494	138,216	97,779	100,135	416,239
<i>1995—</i>							
April	7,044	8,843	16,246	53,435	39,304	40,854	165,726
May	5,499	6,453	13,155	42,633	26,320	36,084	130,144
June	4,456	5,483	10,977	35,533	24,020	32,866	113,335
<i>June quarter 1995</i>	16,999	20,779	40,378	131,601	89,644	109,804	409,205
BED OCCUPANCY RATES (per cent)							
<i>June quarter 1994</i>	25.8	27.8	23.6	30.5	29.5	32.0	29.4
<i>1995—</i>							
April	30.1	32.6	31.2	34.8	35.1	39.7	35.2
May	22.8	23.0	24.4	26.8	22.8	34.0	26.7
June	19.3	20.2	21.1	23.1	21.5	32.0	24.1
<i>June quarter 1995</i>	24.1	25.2	25.5	28.2	26.4	35.2	28.7
GUEST ARRIVALS							
<i>June quarter 1994</i>	10,972	12,176	25,113	83,071	56,204	43,231	230,767
<i>1995—</i>							
April	4,696	5,450	10,321	33,569	24,772	15,913	94,721
May	3,494	3,970	7,837	26,085	16,290	14,767	72,443
June	2,821	3,128	6,498	22,168	13,556	13,591	61,762
<i>June quarter 1995</i>	11,011	12,548	24,656	81,822	54,618	44,271	228,926
AVERAGE LENGTH OF STAY (days)							
<i>June quarter 1994</i>	1.6	1.7	1.7	1.7	1.7	2.3	1.8
<i>June quarter 1995</i>	1.5	1.7	1.6	1.6	1.6	2.5	1.8
TAKINGS FROM ACCOMMODATION (\$'000)							
<i>June quarter 1994</i>	601	639	1,292	4,594	3,963	6,710	17,799
<i>1995—</i>							
April	240	277	505	1,839	1,639	2,528	7,028
May	197	225	422	1,565	1,208	2,440	6,056
June	151	178	342	1,241	1,002	1,956	4,870
<i>June quarter 1995</i>	588	680	1,268	4,645	3,849	6,923	17,954

TABLE 7 — HOTELS, MOTELS AND GUEST HOUSES WITH FACILITIES BY STATISTICAL DIVISION,
TASMANIA

Particulars	Greater Hobart (SD)			Southern (SD)			Northern (SD)		
	Licensed hotels with facilities	Motels and guest houses	Total	Licensed hotels with facilities	Motels and guest houses	Total	Licensed hotels with facilities	Motels and guest houses	Total
ESTABLISHMENTS, CAPACITY AND EMPLOYMENT									
<i>June quarter 1994—</i>									
Establishments	23	28	51	14	9	23	32	22	54
Guest rooms	1,210	648	1,858	472	98	570	1,093	446	1,539
Bed spaces	3,146	1,937	5,083	1,443	358	1,801	3,370	1,476	4,846
Employment (persons)	1,523	286	1,809	237	44	281	1,163	140	1,303
<i>June quarter 1995—</i>									
Establishments	23	27	50	14	10	24	32	23	55
Guest rooms	1,220	648	1,868	477	118	595	1,130	431	1,561
Bed spaces	3,176	1,996	5,172	1,456	411	1,867	3,326	1,397	4,723
Employment (persons)	1,533	275	1,808	235	60	295	1,116	142	1,258
ROOM NIGHTS OCCUPIED									
<i>June quarter 1994</i>	65,927	34,420	100,347	15,027	3,049	18,076	53,839	20,658	74,497
<i>1995—</i>									
April	23,928	12,923	36,851	6,136	2,181	8,317	17,754	7,041	24,795
May	22,797	10,630	33,427	3,942	1,476	5,418	17,497	7,200	24,697
June	19,215	8,170	27,385	3,370	1,200	4,570	16,582	5,382	21,964
<i>June quarter 1995</i>	65,940	31,723	97,663	13,448	4,857	18,305	51,833	19,623	71,456
ROOM OCCUPANCY RATES (per cent)									
<i>June quarter 1994</i>	59.9	58.4	59.3	35.0	35.2	35.0	54.1	50.9	53.2
<i>1995—</i>									
April	65.4	66.5	65.8	42.9	61.6	46.6	52.4	54.5	52.9
May	60.3	52.9	57.7	26.7	40.3	29.4	49.9	53.9	51.0
June	52.5	42.0	48.9	23.5	33.9	25.6	48.9	42.1	47.1
<i>June quarter 1995</i>	59.4	53.8	57.5	31.0	45.2	33.8	50.4	50.2	50.4
GUEST NIGHTS									
<i>June quarter 1994</i>	98,117	60,850	158,967	30,782	6,866	37,648	85,784	40,143	125,927
<i>1995—</i>									
April	40,579	25,150	65,729	13,685	5,068	18,753	30,962	13,783	44,745
May	34,383	18,426	52,809	7,299	2,774	10,073	27,239	12,783	40,022
June	29,827	14,831	44,658	7,071	2,605	9,676	26,182	10,249	36,431
<i>June quarter 1995</i>	104,789	58,407	163,196	28,055	10,447	38,502	84,383	36,815	121,198
BED OCCUPANCY RATES (per cent)									
<i>June quarter 1994</i>	34.3	34.5	34.4	23.4	21.5	23.1	28.0	29.9	28.6
<i>1995—</i>									
April	42.6	42.0	42.4	31.3	41.1	33.5	31.0	32.9	31.6
May	34.9	29.8	32.9	16.2	21.8	17.4	26.4	29.5	27.3
June	31.3	24.8	28.8	16.2	21.1	17.3	26.2	24.6	25.8
<i>June quarter 1995</i>	36.3	32.2	34.7	21.2	27.9	22.7	27.9	29.0	28.2
GUEST ARRIVALS									
<i>June quarter 1994</i>	40,011	29,746	69,757	23,640	4,648	28,288	47,996	21,953	69,949
<i>1995—</i>									
April	15,982	12,211	28,193	10,730	3,910	14,640	17,355	8,137	25,492
May	13,764	9,530	23,294	6,154	2,226	8,380	14,971	7,418	22,389
June	12,834	7,698	20,532	5,167	1,686	6,853	13,397	6,443	19,840
<i>June quarter 1995</i>	42,580	29,439	72,019	22,051	7,822	29,873	45,723	21,998	67,721
AVERAGE LENGTH OF STAY (days)									
<i>June quarter 1994</i>	2.5	2.0	2.3	1.3	1.5	1.3	1.8	1.8	1.8
<i>June quarter 1995</i>	2.5	2.0	2.3	1.3	1.3	1.3	1.8	1.7	1.8
TAKINGS FROM ACCOMMODATION (\$'000)									
<i>June quarter 1994</i>	5,921	2,086	8,007	888	186	1,074	3,824	1,241	5,065
<i>1995—</i>									
April	2,323	807	3,130	404	212	616	1,365	439	1,803
May	2,159	649	2,809	226	134	360	1,294	426	1,720
June	1,744	486	2,230	203	115	318	1,092	318	1,410
<i>June quarter 1995</i>	6,226	1,942	8,168	834	460	1,294	3,750	1,183	4,933

TABLE 7 — HOTELS, MOTELS AND GUEST HOUSES WITH FACILITIES BY STATISTICAL DIVISION,
TASMANIA—continued

Particulars	Mersey-Lyell (SD)			Total Tasmania		East Coast (a)	
	Licensed hotels with facilities	Motels and guest houses	Total	Licensed hotels with facilities	Motels and guest houses	Total	Total
ESTABLISHMENTS, CAPACITY AND EMPLOYMENT							
June quarter 1994—							
Establishments	22	27	49	91	86	177	14
Guest rooms	713	642	1,355	3,488	1,834	5,322	447
Bed spaces	2,002	1,846	3,848	9,961	5,617	15,578	1,432
Employment (persons)	545	281	826	3,468	751	4,219	229
June quarter 1995—							
Establishments	23	27	50	92	87	179	14
Guest rooms	718	666	1,384	3,545	1,863	5,408	465
Bed spaces	1,974	1,963	3,937	9,932	5,767	15,699	1,481
Employment (persons)	519	272	791	3,403	749	4,152	259
ROOM NIGHTS OCCUPIED							
June quarter 1994	29,010	25,810	54,820	163,803	83,937	247,740	13,882
1995—							
April	10,071	10,183	20,254	57,889	32,328	90,217	6,406
May	9,195	7,711	16,906	53,431	27,017	80,448	4,079
June	7,029	6,476	13,505	46,196	21,228	67,424	4,109
June quarter 1995	26,295	24,370	50,665	157,516	80,573	238,089	14,594
ROOM OCCUPANCY RATES (per cent)							
June quarter 1994	44.7	44.2	44.5	51.6	50.4	51.2	34.1
1995—							
April	46.8	51.0	48.8	54.4	57.8	55.6	45.9
May	41.3	37.3	39.4	48.6	46.8	48.0	28.3
June	32.6	32.4	32.5	43.4	38.1	41.6	29.5
June quarter 1995	40.2	40.2	40.2	48.8	47.6	48.4	34.5
GUEST NIGHTS							
June quarter 1994	49,114	44,583	93,697	263,797	152,442	416,239	28,674
1995—							
April	17,573	18,926	36,499	102,799	62,927	165,726	14,235
May	14,621	12,619	27,240	83,542	46,602	130,144	7,480
June	11,609	10,961	22,570	74,689	38,646	113,335	8,676
June quarter 1995	43,803	42,506	86,309	261,030	148,175	409,205	30,391
BED OCCUPANCY RATES (per cent)							
June quarter 1994	27.0	26.5	26.8	29.1	29.9	29.4	22.0
1995—							
April	29.7	32.1	30.9	34.5	36.4	35.2	32.0
May	23.9	20.7	22.3	27.1	26.1	26.7	16.3
June	19.6	18.6	19.1	25.1	22.4	24.1	19.5
June quarter 1995	24.4	23.8	24.1	28.9	28.3	28.7	22.6
GUEST ARRIVALS							
June quarter 1994	32,141	30,632	62,773	143,788	86,979	230,767	21,493
1995—							
April	12,490	13,906	26,396	56,557	38,164	94,721	10,841
May	9,579	8,801	18,380	44,468	27,975	72,443	6,162
June	7,356	7,181	14,537	38,754	23,008	61,762	5,881
June quarter 1995	29,425	29,888	59,313	139,779	89,147	228,926	22,884
AVERAGE LENGTH OF STAY (days)							
June quarter 1994	1.5	1.5	1.5	1.8	1.8	1.8	1.3
June quarter 1995	1.5	1.4	1.5	1.9	1.7	1.8	1.3
TAKINGS FROM ACCOMMODATION (\$'000)							
June quarter 1994	2,026	1,626	3,652	12,660	5,139	17,799	760
1995—							
April	764	714	1,478	4,856	2,172	7,028	474
May	632	516	1,168	4,331	1,725	6,056	266
June	492	420	912	3,532	1,338	4,870	262
June quarter 1995	1,908	1,650	3,558	12,719	5,235	17,954	1,002

(a) The East Coast Tourist Area comprises Glamorgan/Spring Bay (M) and Break O' Day (M).

TABLE 8 — HOTELS, MOTELS AND GUEST HOUSES WITH FACILITIES: STATISTICAL DIVISIONS

Statistical Divisions and selected Statistical Local Areas	Establish- ments	Guest rooms	Bed spaces	Employ- ment (persons)	Room nights occupied				Room occupancy rates (per cent)			
					Apr.	May	June	June qtr	Apr.	May	June	June qtr
Clarence (C)	4	54	158	56	922	599	470	1,991	56.9	35.8	29.0	40.5
Glenorchy (C)	6	161	428	91	2,691	2,471	1,817	6,979	55.7	49.5	37.6	47.6
Hobart (C)												
Inner	6	432	1,085	227	8,280	6,632	5,476	20,388	63.9	49.5	42.3	51.9
Remainder	29	1,147	3,295	1,379	24,274	23,176	19,224	66,674	70.5	65.2	55.9	63.9
Total	35	1,579	4,380	1,606	32,554	29,808	24,700	87,062	68.7	60.9	52.1	60.6
Balance	5	74	206	55	684	549	398	1,631	30.8	23.9	17.9	24.2
Greater Hobart (SD)	50	1,868	5,172	1,808	36,851	33,427	27,385	97,663	65.8	57.7	48.9	57.5
Glamorgan/Spring Bay (M)	9	304	1,055	170	4,695	2,985	2,845	10,525	51.5	31.7	31.2	38.0
Tasman (M)	6	138	427	76	2,401	1,607	1,136	5,144	58.0	37.6	27.4	41.0
Balance	9	153	385	49	1,221	826	589	2,636	26.6	17.4	12.8	18.9
Southern (SD)	24	595	1,867	295	8,317	5,418	4,570	18,305	46.6	29.4	25.6	33.8
Break O'Day (M)	5	161	426	89	1,711	1,094	1,264	4,069	35.4	21.9	26.2	27.8
Launceston (C)												
Inner	10	474	1,343	296	8,361	8,267	8,554	25,182	58.8	56.3	60.2	58.4
Parts B & C	23	599	1,983	297	9,725	9,998	7,390	27,113	54.1	53.8	41.1	49.7
Total	33	1,073	3,326	593	18,086	18,265	15,944	52,295	56.2	54.9	49.5	53.6
Northern Midlands (M) — Pts A & B	3	25	67	18	289	245	159	693	38.5	31.6	21.2	30.5
West Tamar (M) — Pts A & B	6	94	283	117	1,292	1,176	1,197	3,665	45.8	40.4	42.4	42.8
Balance	8	208	621	441	3,417	3,917	3,400	10,734	54.8	60.7	55.9	57.2
Northern (SD)	55	1,561	4,723	1,258	24,795	24,697	21,964	71,456	52.9	51.0	47.1	50.4
Burnie (C) — Pts A & B	8	228	554	128	3,231	3,433	3,184	9,848	47.2	48.6	46.5	47.5
Central Coast (M) — Pts A & B	5	114	288	75	986	1,124	1,054	3,164	28.8	31.8	30.8	30.5
Circular Head (M)	3	94	236	80	1,586	1,309	774	3,669	56.2	44.9	27.4	42.9
Devonport (C)	8	236	686	136	2,741	2,884	2,395	8,020	38.7	39.4	33.8	37.3
Waratah/Wynyard (M) — Pts A & B	8	132	350	65	1,512	940	808	3,260	38.2	23.0	20.4	27.1
West Coast (M)	11	418	1,226	162	6,457	4,182	2,731	13,370	51.5	32.3	21.8	35.1
Balance	7	162	597	145	3,741	3,034	2,559	9,334	77.0	60.4	52.7	63.3
Mersey-Lyell (SD)	50	1,384	3,937	791	20,254	16,906	13,505	50,665	48.8	39.4	32.5	40.2
Total Tasmania	179	5,408	15,699	4,152	90,217	80,448	67,424	238,089	55.6	48.0	41.6	48.4

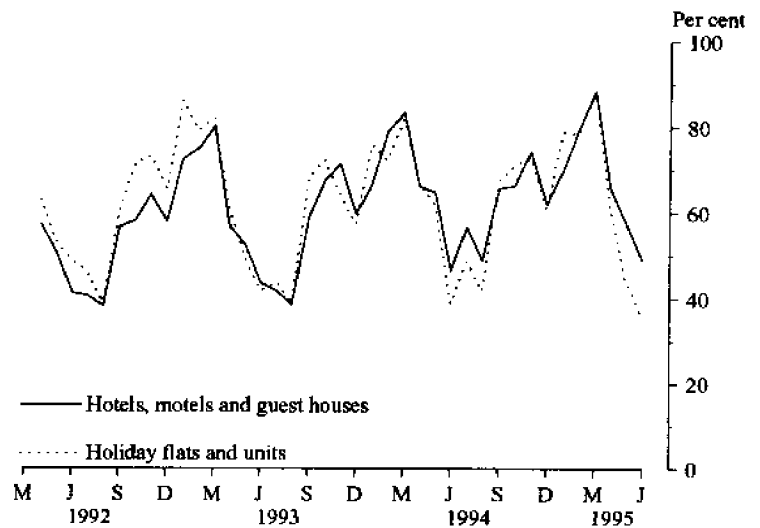
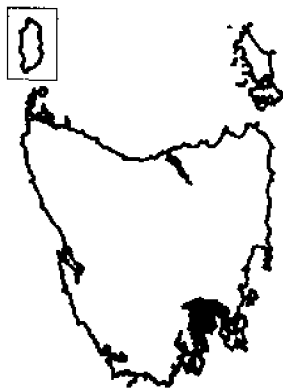
AND SELECTED STATISTICAL LOCAL AREAS, TASMANIA, JUNE QUARTER 1995

<i>Guest nights</i>				<i>Guest arrivals</i>				<i>Takings from accommodation (\$ '000)</i>			
<i>Apr.</i>	<i>May</i>	<i>June</i>	<i>June qtr</i>	<i>Apr.</i>	<i>May</i>	<i>June</i>	<i>June qtr</i>	<i>Apr.</i>	<i>May</i>	<i>June</i>	<i>June qtr</i>
1,822	1,003	806	3,631	1,076	681	560	2,317	51	38	27	116
4,942	4,038	2,932	11,912	2,396	2,288	1,511	6,195	121	106	79	305
13,961	9,923	8,108	31,992	6,314	4,769	4,120	15,203	614	469	375	1,458
43,682	36,919	32,221	112,822	17,545	14,920	13,980	46,445	2,298	2,165	1,727	6,189
57,643	46,842	40,329	144,814	23,859	19,689	18,100	61,648	2,912	2,634	2,101	7,647
1,322	926	591	2,839	862	636	361	1,859	46	31	23	100
65,729	52,809	44,658	163,196	28,193	23,294	20,532	72,019	3,130	2,809	2,230	8,168
10,883	5,606	6,227	22,716	8,253	4,678	4,181	17,112	377	218	202	797
5,527	3,111	2,501	11,139	4,541	2,555	1,838	8,934	156	90	72	318
2,343	1,356	948	4,647	1,846	1,147	834	3,827	83	51	45	179
18,753	10,073	9,676	38,502	14,640	8,380	6,853	29,873	616	360	318	1,294
3,352	1,874	2,449	7,675	2,588	1,484	1,700	5,772	96	48	60	205
13,230	11,955	12,660	37,845	7,846	6,718	6,151	20,715	642	624	528	1,794
19,042	17,621	13,888	50,551	10,685	9,739	8,169	28,593	626	599	440	1,666
32,272	29,576	26,548	88,396	18,531	16,457	14,320	49,308	1,268	1,223	968	3,459
499	381	240	1,120	281	238	157	676	11	8	5	25
2,571	2,057	2,049	6,677	1,602	1,327	1,174	4,103	83	67	71	221
6,051	6,134	5,145	17,330	2,490	2,883	2,489	7,862	345	373	306	1,023
44,745	40,022	36,431	121,198	25,492	22,389	19,840	67,721	1,803	1,720	1,410	4,933
4,445	4,297	4,386	13,128	3,459	3,104	2,994	9,557	205	219	203	628
1,882	1,649	1,600	5,131	1,091	1,197	1,128	3,416	48	53	51	152
2,853	2,050	1,197	6,100	2,091	1,530	773	4,394	96	78	46	220
4,529	4,679	3,522	12,730	3,110	2,871	2,315	8,296	191	189	156	536
2,824	1,761	1,721	6,306	2,045	1,135	1,144	4,324	81	49	41	171
12,217	6,843	4,565	23,625	9,352	4,631	2,927	16,910	429	253	155	837
7,749	5,961	5,579	19,289	5,248	3,912	3,256	12,416	429	325	260	1,014
36,499	27,240	22,570	86,309	26,396	18,380	14,537	59,313	1,478	1,168	912	3,558
165,726	130,144	113,335	409,205	94,721	72,443	61,762	228,926	7,028	6,056	4,870	17,954

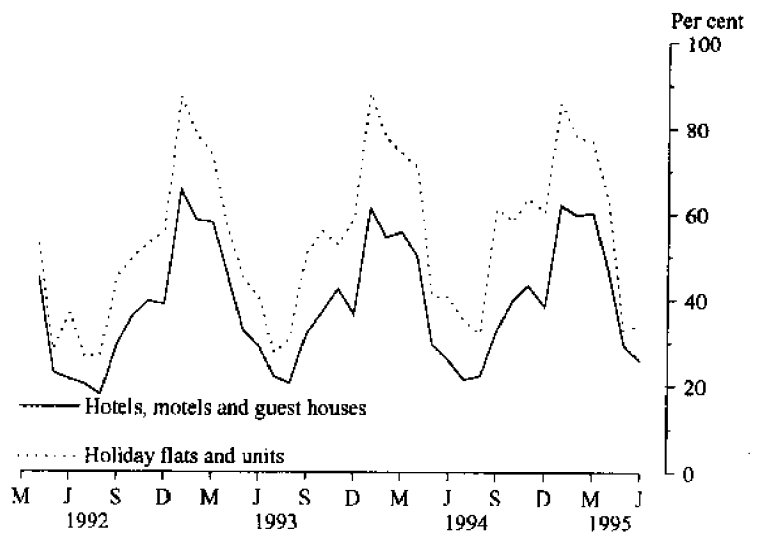
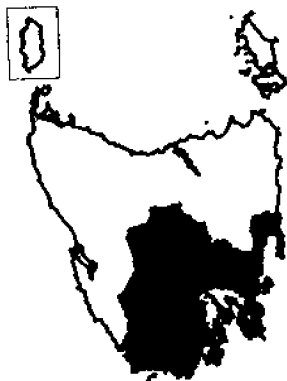
MONTHLY ROOM/UNIT OCCUPANCY RATES

Graphs on these pages compare room occupancy rates for hotels, motels and guest houses with facilities with unit occupancy rates for holiday unit establishments for each Statistical Division and the East Coast Tourist area.

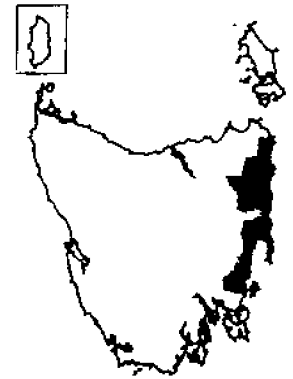
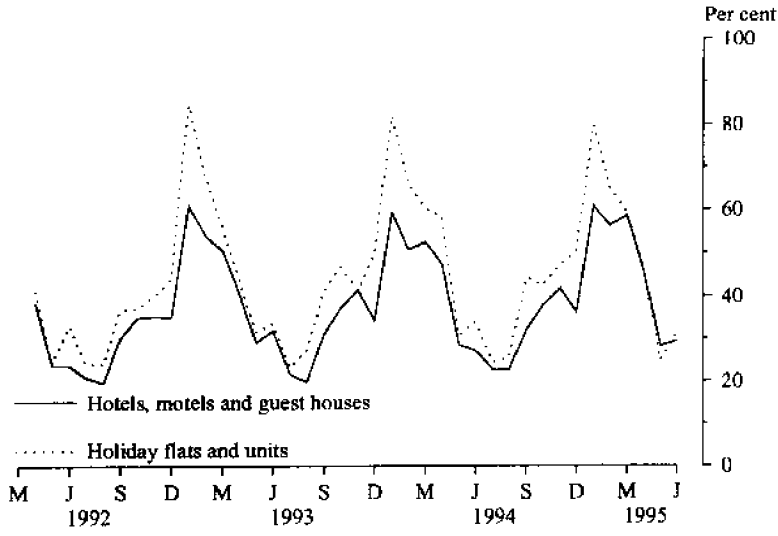
GREATER HOBART STATISTICAL DIVISION



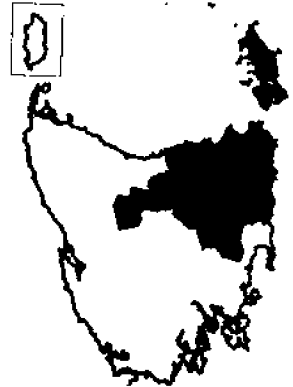
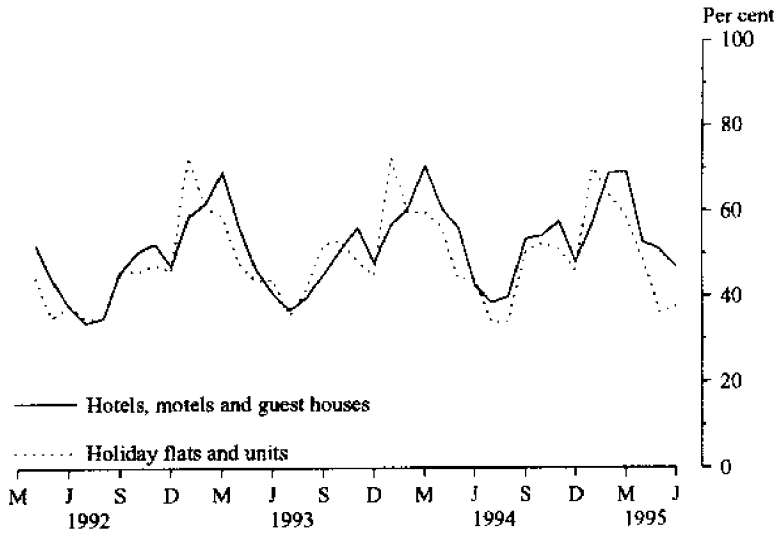
SOUTHERN STATISTICAL DIVISION



EAST COAST TOURIST AREA



NORTHERN STATISTICAL DIVISION



MERSEY-LYELL STATISTICAL DIVISION

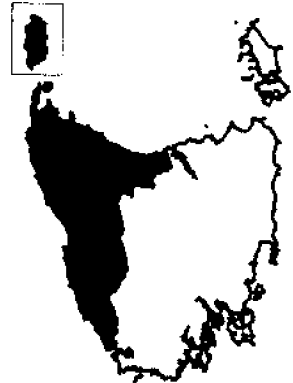
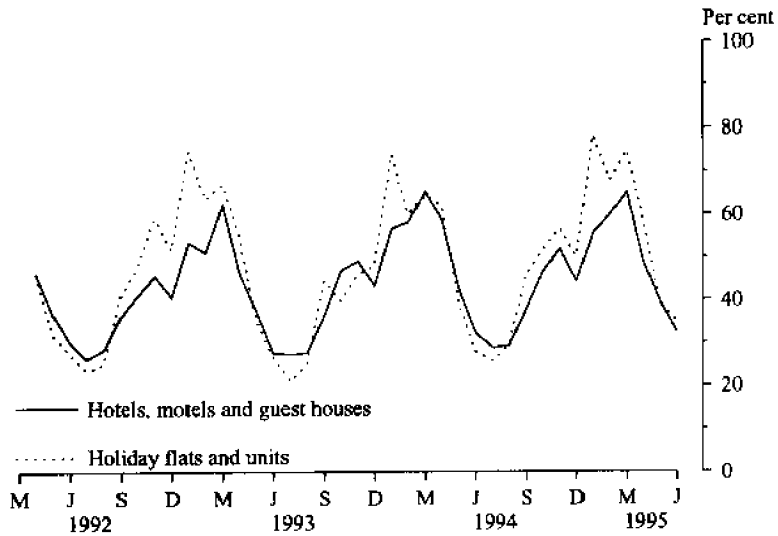


TABLE 9 — HOLIDAY FLATS, UNITS AND HOUSES BY STATISTICAL DIVISION AND SELECTED STATISTICAL AREAS, TASMANIA

Particulars	Northern (SD)				Total	Mersey-Lyell (SD)	Total Tasmania	East Coast (a)
	Greater Hobart (SD)	Southern (SD)	Greater Launceston and Central North (SSDs)	North Eastern (SSD)				
LETTING ENTITIES, CAPACITY AND EMPLOYMENT								
<i>June quarter 1994—</i>								
Letting entities	13	9	9	7	16	14	52	11
Flats, units and houses								
Single bedroom	53	17	118	30	148	42	260	41
Multiple bedroom	173	80	112	71	183	97	533	95
<i>Total flats, units and houses</i>	<i>226</i>	<i>97</i>	<i>230</i>	<i>101</i>	<i>331</i>	<i>139</i>	<i>793</i>	<i>136</i>
Bed spaces	981	509	872	476	1,348	648	3,486	637
Employment (persons)	65	44	125	30	155	49	313	49
<i>June quarter 1995—</i>								
Letting entities	13	9	11	7	18	14	54	11
Flats, units and houses								
Single bedroom	48	21	93	29	122	39	230	40
Multiple bedroom	184	81	139	72	211	124	600	96
<i>Total flats, units and houses</i>	<i>232</i>	<i>102</i>	<i>232</i>	<i>101</i>	<i>333</i>	<i>163</i>	<i>830</i>	<i>136</i>
Bed spaces	1,034	511	902	476	1,378	754	3,677	627
Employment (persons)	72	46	97	30	127	50	295	52
UNIT NIGHTS OCCUPIED								
<i>June quarter 1994</i>	<i>11,516</i>	<i>4,467</i>	<i>11,922</i>	<i>2,587</i>	<i>14,509</i>	<i>5,434</i>	<i>35,926</i>	<i>5,040</i>
<i>1995—</i>								
April	4,250	1,923	3,780	1,107	4,887	2,868	13,928	1,909
May	3,203	1,045	3,077	659	3,736	1,963	9,947	1,045
June	2,473	1,042	2,803	976	3,779	1,728	9,022	1,287
<i>June quarter 1995</i>	<i>9,926</i>	<i>4,010</i>	<i>9,660</i>	<i>2,742</i>	<i>12,402</i>	<i>6,559</i>	<i>32,897</i>	<i>4,241</i>
UNIT OCCUPANCY RATES (per cent)								
<i>June quarter 1994</i>	<i>56.0</i>	<i>50.6</i>	<i>57.0</i>	<i>28.1</i>	<i>48.2</i>	<i>43.0</i>	<i>49.8</i>	<i>40.7</i>
<i>1995—</i>								
April	61.1	62.8	54.3	36.5	48.9	58.7	55.9	46.8
May	44.5	33.0	42.8	21.0	36.2	38.8	38.7	24.8
June	35.5	34.1	40.3	32.2	37.8	35.3	36.2	31.5
<i>June quarter 1995</i>	<i>47.0</i>	<i>43.2</i>	<i>45.8</i>	<i>29.8</i>	<i>40.9</i>	<i>44.2</i>	<i>43.6</i>	<i>34.3</i>
UNIT LETTINGS								
<i>June quarter 1994</i>	<i>3,969</i>	<i>2,655</i>	<i>6,201</i>	<i>1,184</i>	<i>7,385</i>	<i>2,919</i>	<i>16,928</i>	<i>2,571</i>
<i>1995—</i>								
April	1,660	1,245	1,930	497	2,427	1,589	6,921	1,057
May	1,120	654	1,510	329	1,839	1,088	4,701	582
June	1,047	612	1,380	394	1,774	817	4,250	607
<i>June quarter 1995</i>	<i>3,827</i>	<i>2,511</i>	<i>4,820</i>	<i>1,220</i>	<i>6,040</i>	<i>3,494</i>	<i>15,872</i>	<i>2,246</i>
AVERAGE LENGTH OF STAY (days)								
<i>June quarter 1994</i>	<i>2.9</i>	<i>1.7</i>	<i>1.9</i>	<i>2.2</i>	<i>2.0</i>	<i>1.9</i>	<i>2.1</i>	<i>2.0</i>
<i>1995—</i>								
April	2.6	1.5	2.0	2.2	2.0	1.8	2.0	1.8
May	2.9	1.6	2.0	2.0	2.0	1.8	2.1	1.8
June	2.4	1.7	2.0	2.5	2.1	2.1	2.1	2.1
<i>June quarter 1995</i>	<i>2.6</i>	<i>1.6</i>	<i>2.0</i>	<i>2.2</i>	<i>2.1</i>	<i>1.9</i>	<i>2.1</i>	<i>1.9</i>
TAKINGS FROM ACCOMMODATION (\$'000)								
<i>June quarter 1994</i>	<i>777</i>	<i>322</i>	<i>908</i>	<i>125</i>	<i>1,033</i>	<i>323</i>	<i>2,455</i>	<i>324</i>
<i>1995—</i>								
April	333	152	313	59	373	192	1,050	143
May	212	83	251	30	282	108	685	74
June	163	71	228	45	273	102	608	75
<i>June quarter 1995</i>	<i>708</i>	<i>306</i>	<i>792</i>	<i>134</i>	<i>927</i>	<i>402</i>	<i>2,343</i>	<i>292</i>

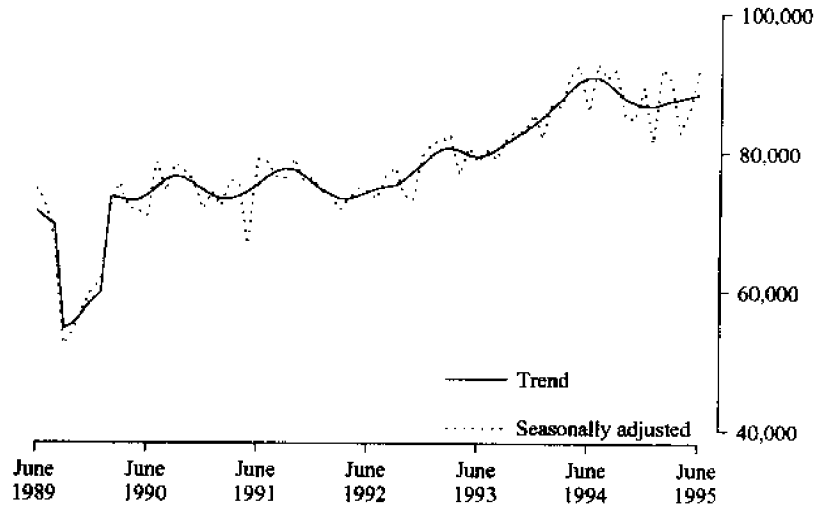
(a) The East Coast Tourist Area comprises Glamorgan/Spring Bay (M) and Break O' Day (M).

TABLE 10—CARAVAN PARKS BY STATISTICAL DIVISION AND SELECTED STATISTICAL AREAS, TASMANIA

Particulars	Northern (SD)					Total	Mersey-Lyell (SD)	Total Tasmania	East Coast (a)
	Greater Hobart (SD)	Southern (SD)	Greater Launceston and Central North (SSDs)	North Eastern (SSD)					
ESTABLISHMENTS, CAPACITY AND EMPLOYMENT									
<i>June quarter 1994—</i>									
Establishments	8	17	11	8	19	26	70	11	
Capacity									
On-site vans	78	65	51	25	76	182	401	63	
Other powered sites	301	780	498	516	1,014	1,371	3,466	647	
Unpowered sites	264	408	521	625	1,146	608	2,426	554	
Cabins, flats, etc.	62	104	60	18	78	171	415	61	
<i>Total capacity</i>	<i>705</i>	<i>1,357</i>	<i>1,130</i>	<i>1,184</i>	<i>2,314</i>	<i>2,332</i>	<i>6,708</i>	<i>1,325</i>	
Sites occupied by long-term guests	92	24	83	8	91	200	407	30	
Other sites permanently reserved	11	334	96	288	384	227	956	363	
Employment (persons)	35	57	33	20	53	74	219	36	
<i>June quarter 1995—</i>									
Establishments	8	18	12	8	20	29	75	11	
Capacity									
On-site vans	79	67	56	25	81	164	391	56	
Other powered sites	295	791	487	538	1,025	1,494	3,605	661	
Unpowered sites	266	381	307	544	851	667	2,165	520	
Cabins, flats, etc.	64	125	73	20	93	182	464	77	
<i>Total capacity</i>	<i>704</i>	<i>1,364</i>	<i>923</i>	<i>1,127</i>	<i>2,050</i>	<i>2,507</i>	<i>6,625</i>	<i>1,314</i>	
Sites occupied by long-term guests	94	29	84	8	92	237	452	33	
Other sites permanently reserved	8	329	102	294	396	302	1,035	351	
Employment (persons)	31	60	35	24	59	88	238	42	
SITE NIGHTS OCCUPIED									
<i>June quarter 1994</i>	<i>18,249</i>	<i>41,832</i>	<i>23,318</i>	<i>33,674</i>	<i>56,992</i>	<i>54,685</i>	<i>171,758</i>	<i>44,787</i>	
<i>1995—</i>									
April	6,717	16,544	9,625	12,111	21,736	24,532	69,529	16,804	
May	5,078	13,341	8,077	10,620	18,697	21,153	58,269	14,084	
June	4,624	12,317	7,018	10,475	17,493	20,602	55,036	13,509	
<i>June quarter 1995</i>	<i>16,419</i>	<i>42,202</i>	<i>24,720</i>	<i>33,206</i>	<i>57,926</i>	<i>66,287</i>	<i>182,834</i>	<i>44,397</i>	
SITE OCCUPANCY RATES (per cent)									
<i>June quarter 1994</i>	<i>28.4</i>	<i>33.9</i>	<i>22.7</i>	<i>31.3</i>	<i>27.1</i>	<i>25.8</i>	<i>28.1</i>	<i>37.1</i>	
<i>1995—</i>									
April	31.8	40.4	34.8	35.8	35.3	32.6	35.0	42.6	
May	23.3	31.6	28.2	30.4	29.4	27.2	28.4	34.6	
June	21.9	30.1	25.3	31.0	28.4	27.4	27.7	34.3	
<i>June quarter 1995</i>	<i>25.6</i>	<i>34.0</i>	<i>29.4</i>	<i>32.4</i>	<i>31.1</i>	<i>29.1</i>	<i>30.3</i>	<i>37.1</i>	
TAKINGS FROM ACCOMMODATION (\$'000)									
<i>June quarter 1994</i>	<i>281</i>	<i>270</i>	<i>262</i>	<i>93</i>	<i>355</i>	<i>529</i>	<i>1,435</i>	<i>227</i>	
<i>1995—</i>									
April	138	191	117	42	159	212	700	138	
May	104	78	86	20	106	150	438	61	
June	73	81	61	27	88	144	385	76	
<i>June quarter 1995</i>	<i>314</i>	<i>350</i>	<i>264</i>	<i>89</i>	<i>353</i>	<i>505</i>	<i>1,523</i>	<i>275</i>	

(a) The East Coast Tourist Area comprises Glamorgan/Spring Bay (M) and Break O' Day (M).

HOTEL/MOTEL ROOM NIGHTS



HOLIDAY UNIT NIGHTS

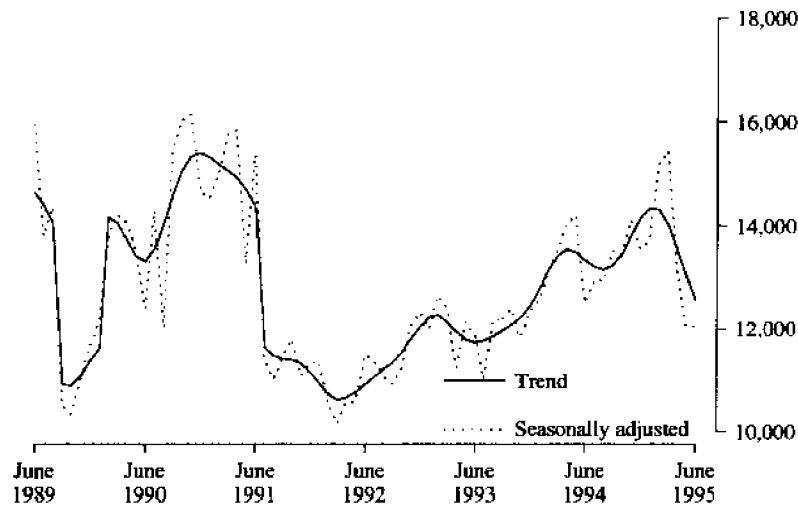


TABLE 11. HOTEL & MOTEL ETC. ROOM NIGHTS, HOLIDAY UNIT NIGHTS AND CARAVAN PARK SITE NIGHTS: SEASONALLY ADJUSTED AND TREND ESTIMATES

		Hotel, motel etc. with facilities, room nights		Holiday unit nights		Caravan park site nights		
		Seasonally adjusted	Trend	Seasonally adjusted	Trend	Seasonally adjusted	Trend	
1993	April	76,657	80,251	11,249	11,944	n.a.	n.a.	
	May	80,737	79,624	12,133	11,795	n.a.	n.a.	
	June	78,670	79,304	11,879	11,736	n.a.	n.a.	
	July	80,240	79,630	11,022	11,763	n.a.	n.a.	
	August	78,961	80,374	12,183	11,850	n.a.	n.a.	
	September	81,774	81,309	12,189	11,965	n.a.	n.a.	
	October	82,982	82,178	12,377	12,075	n.a.	n.a.	
	November	82,910	82,936	11,835	12,211	n.a.	n.a.	
	December	85,522	83,932	12,343	12,455	n.a.	n.a.	
	1994	January	82,019	85,054	12,573	12,784	n.a.	n.a.
		February	86,846	86,326	13,080	13,144	n.a.	n.a.
		March	86,570	87,638	13,540	13,437	n.a.	n.a.
April		90,936	89,005	14,041	13,558	n.a.	n.a.	
May		92,534	90,186	14,225	13,493	n.a.	n.a.	
June		85,913	90,781	12,505	13,334	n.a.	n.a.	
July		92,897	90,782	12,974	13,206	n.a.	n.a.	
August		90,625	90,052	12,927	13,161	n.a.	n.a.	
September		91,936	88,890	13,534	13,229	n.a.	n.a.	
October		85,202	87,813	13,469	13,456	n.a.	n.a.	
November		84,732	87,136	14,117	13,815	n.a.	n.a.	
December		89,479	86,737	13,550	14,173	n.a.	n.a.	
1995	January	81,409	86,728	13,729	14,359	n.a.	n.a.	
	February	92,170	87,107	15,207	14,313	n.a.	n.a.	
	March	90,464	87,510	15,452	14,033	n.a.	n.a.	
	April	82,877	87,827	13,223	13,581	n.a.	n.a.	
	May	86,144	88,169	12,043	13,047	n.a.	n.a.	
	June	92,225	88,467	12,047	12,542	n.a.	n.a.	

TABLE 12 — VISITOR HOSTELS BY STATISTICAL DIVISION, TASMANIA

Particulars	Greater Hobart (SD)	Southern (SD)	Greater Hobart (SD) and Southern (SD)	Northern (SD)	Mersey-Lyell (SD)	Total Tasmania
ESTABLISHMENTS, CAPACITY AND EMPLOYMENT						
<i>June quarter 1994—</i>						
Establishments	5	13	18	9	9	36
Bed spaces	n.p.	n.p.	625	283	542	1,450
Employment (persons)	n.p.	n.p.	53	12	25	90
<i>June quarter 1995—</i>						
Establishments	8	16	24	9	9	42
Bed spaces	442	437	879	295	574	1,748
Employment (persons)	43	32	75	15	23	113
GUEST NIGHTS						
<i>June quarter 1994</i>						
	n.p.	n.p.	8,175	2,041	4,898	15,114
<i>1995—</i>						
April	3,388	2,723	6,111	1,173	3,042	10,326
May	2,082	1,702	3,784	561	1,237	5,582
June	1,655	1,007	2,662	516	1,171	4,349
<i>June quarter 1995</i>	<i>7,125</i>	<i>5,432</i>	<i>12,557</i>	<i>2,250</i>	<i>5,450</i>	<i>20,257</i>
BED OCCUPANCY RATES (per cent)						
<i>June quarter 1994</i>						
	n.p.	n.p.	14.4	7.9	9.9	11.5
<i>1995—</i>						
April	25.6	20.8	23.2	13.3	17.7	19.7
May	15.2	12.6	13.9	6.1	7.0	10.3
June	12.5	7.7	10.1	5.8	7.1	8.4
<i>June quarter 1995</i>	<i>17.7</i>	<i>13.7</i>	<i>15.7</i>	<i>8.4</i>	<i>10.6</i>	<i>12.8</i>
GUEST ARRIVALS						
<i>June quarter 1994</i>						
	n.p.	n.p.	5,420	1,365	2,656	9,441
<i>1995—</i>						
April	2,094	1,670	3,764	858	2,154	6,776
May	1,207	749	1,956	361	903	3,220
June	885	631	1,516	368	853	2,737
<i>June quarter 1995</i>	<i>4,186</i>	<i>3,050</i>	<i>7,236</i>	<i>1,587</i>	<i>3,910</i>	<i>12,733</i>
AVERAGE LENGTH OF STAY (days)						
<i>June quarter 1994</i>						
	n.p.	n.p.	1.5	1.5	1.8	1.6
<i>1995—</i>						
April	1.6	1.6	1.6	1.4	1.4	1.5
May	1.7	2.3	1.9	1.6	1.4	1.7
June	1.9	1.6	1.8	1.4	1.4	1.6
<i>June quarter 1995</i>	<i>1.7</i>	<i>1.8</i>	<i>1.7</i>	<i>1.4</i>	<i>1.4</i>	<i>1.6</i>
TAKINGS FROM ACCOMMODATION (\$'000)						
<i>June quarter 1994</i>						
	n.p.	n.p.	104	19	51	175
<i>1995—</i>						
April	40	31	71	12	37	120
May	23	18	41	6	13	60
June	18	12	30	5	11	46
<i>June quarter 1995</i>	<i>82</i>	<i>60</i>	<i>142</i>	<i>23</i>	<i>62</i>	<i>226</i>

TABLE 13. PASSENGER ARRIVALS AND DEPARTURES, TASMANIA,
INTERSTATE AND INTERNATIONAL (a)(d)
(Source: Tourism, Sport & Recreation)

Period	Arrivals			Total	Total Departures (b)	Cruise Ships (c)	
	By air		By sea			Arrivals	Departures
	Interstate	International					
1987	526,517	9,446	88,343	624,306	626,297	7,398	6,745
1988	571,344	8,625	101,572	681,541	683,635	5,497	6,161
1989	449,481	8,489	118,646	576,616	591,152	4,149	4,149
1990	555,631	8,629	120,004	684,264	679,833	3,255	3,255
1991	625,366	5,897	131,375	762,638	764,731	6,720	6,663
1992	652,092	4,428	114,969	771,489	761,109	4,608	4,608
1993	694,244	5,144	115,381	814,769	814,835	2,033	2,033
1994	745,508	4,166	128,644	878,318	880,936	6,592	6,592
1993-							
January	71,801	513	15,475	87,789	107,018	150	150
February	60,624	656	12,278	73,558	65,492	697	697
March	57,002	449	13,040	70,491	73,559	586	586
April	62,846	340	12,083	75,269	80,402	-	-
May	45,373	451	5,741	51,565	61,725	-	-
June	51,154	258	6,067	57,479	54,776	-	-
July	45,868	523	4,855	51,246	53,956	-	-
August	45,988	357	4,553	50,898	55,644	-	-
September	62,578	379	9,415	72,372	58,126	-	-
October	57,362	434	7,965	65,761	65,042	-	-
November	59,592	393	8,561	68,546	66,733	-	-
December	74,056	391	15,348	89,795	72,362	600	600
1994-							
January	73,470	473	12,536	86,479	103,610	1,596	1,596
February	63,506	413	12,324	76,243	69,690	2,470	2,470
March	66,848	414	13,054	80,316	85,030	1,064	1,064
April	62,519	502	11,732	74,753	78,095	-	-
May	50,076	242	8,151	58,469	70,924	-	-
June	52,737	167	7,629	60,533	56,244	-	-
July	52,995	186	6,983	60,164	63,737	-	-
August	50,447	250	7,199	57,896	61,996	-	-
September	69,099	340	13,430	82,869	66,659	-	-
October	61,361	422	11,466	73,249	71,846	980	980
November	63,701	338	10,707	74,746	73,918	482	482
December	78,749	419	13,433	92,601	79,187	-	-
1995-							
January	80,818	318	12,430	93,566	115,126	1,368	1,368
February	78,700	269	11,704	90,673	81,727	1,772	1,772
March	68,790	351	13,087	82,228	86,348	659	659
April	66,840	423	9,584	76,847	83,918	-	-
May	53,364	277	8,368	62,009	70,563	-	-
June	57,146	211	7,678	65,035	62,555	-	-

(a) The following persons are not included in these statistics : passengers under three years of age accompanied by an adult ; passengers travelling on chartered flights with minor carriers ; passengers travelling on private or VIP flights.

(b) The proportion of departing passengers who were visitors was shown to be about 58 per cent in the 1981 Tasmanian Visitor Survey, around 55 per cent in the 1984 TVS, about 53 per cent in the 1986 TVS, nearly 60 per cent in the 1988 TVS, close to 65 per cent in the 1990 TVS, almost 58 per cent in the 1991 TVS, almost 55 per cent in the 1992 TVS, just over 58 per cent in the 1993 TVS and almost 60 per cent in the 1994 TVS.

(c) Cruise ship statistics were not collected before November 1986 and are not included in Total Arrivals and Total Departures.

(d) The domestic airline pilots dispute commenced on 18 August 1989 with the pilots working restricted hours (9 a.m to 5 p.m). The pilots were suspended on 23 August 1989.

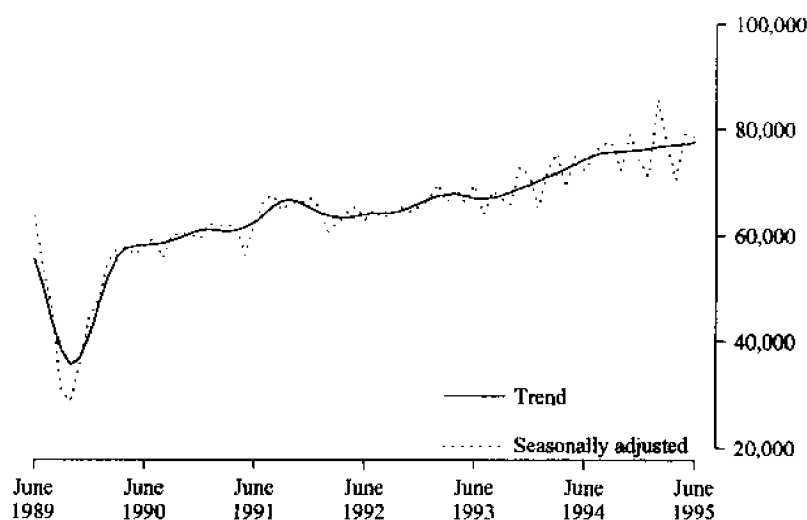
TABLE 14. TOTAL PASSENGER ARRIVALS BY AIR AND SEA INTO TASMANIA :
SEASONALLY ADJUSTED AND TREND SERIES (a)(b)

<i>Period</i>	<i>Original</i>	<i>Seasonally adjusted (a)</i>	<i>Trend</i>
<i>December 1987</i>	63,187	52,082	53,429
<i>1988</i>	68,809	57,058	56,003
<i>1989</i>	53,613	44,471	41,098
<i>1990</i>	73,421	59,307	60,865
<i>1991</i>	83,162	66,847	65,082
<i>1992</i>	82,262	65,418	65,953
<i>1993</i>	89,795	70,896	69,538
<i>1994</i>	92,601	73,654	75,796
<i>1993-</i>			
<i>January</i>	87,789	66,589	66,714
<i>February</i>	73,558	69,583	67,313
<i>March</i>	70,491	66,074	67,607
<i>April</i>	75,269	68,587	67,637
<i>May</i>	51,565	66,034	67,322
<i>June</i>	57,479	69,510	66,870
<i>July</i>	51,246	63,895	66,753
<i>August</i>	50,898	68,231	66,987
<i>September</i>	72,372	66,639	67,385
<i>October</i>	65,761	65,813	67,991
<i>November</i>	68,546	72,648	68,740
<i>December</i>	89,795	70,896	69,538
<i>1994-</i>			
<i>January</i>	86,479	65,011	70,304
<i>February</i>	76,243	72,066	70,934
<i>March</i>	80,316	75,487	71,588
<i>April</i>	74,753	68,991	72,405
<i>May</i>	58,469	75,071	73,318
<i>June</i>	60,533	72,090	74,263
<i>July</i>	60,164	75,220	75,087
<i>August</i>	57,896	77,208	75,487
<i>September</i>	82,869	77,430	75,652
<i>October</i>	73,249	72,248	75,776
<i>November</i>	74,746	79,140	75,858
<i>December</i>	92,601	73,654	76,035
<i>1995-</i>			
<i>January</i>	93,566	71,017	76,258
<i>February</i>	90,673	85,673	76,585
<i>March</i>	82,228	77,026	76,844
<i>April</i>	76,847	70,337	77,000
<i>May</i>	62,009	79,223	77,098
<i>June</i>	65,035	78,490	77,550

(a) There is an annual recalculation of seasonal adjustment factors to include the most recent year's arrivals. This occurs at the end of each financial year and may cause revisions to previously-published seasonally-adjusted and trend figures, as can be seen in Table 14. A full printout of seasonally-adjusted and trend series figures dating back to 1971 can be obtained through the publication officer for this publication (Eddie Oakford).

(b) The domestic airline dispute commenced on 18 August 1989 with the pilots working restricted hours (9 a.m. to 5 p.m). The pilots were suspended on 23 August 1989.

TOTAL ARRIVALS IN TASMANIA



Source: Dept. of Tourism, Sport & Recreation

EXPLANATORY NOTES

INTRODUCTION

1 This publication contains data for Tasmania from a quarterly survey of tourist accommodation establishments.

SCOPE

2 Tourist accommodation establishments currently included in the survey comprise two groups:

- Establishments which provide predominantly short-term accommodation (i.e. for periods of less than 2 months) to the general public. These include:

Hotels, motels and guest houses, with facilities being hotels licensed to operate a public bar and motels, private hotels and guest houses all of which provide a bath (or shower) and toilet in most guest rooms and have breakfast available for guests. NOTE: From December quarter 1993, hotel, motel and guest house establishments with fewer than five rooms have been formally excluded from the scope of this statistical collection.

Holiday flats, units and houses (excluding establishments predominantly operated on a time share basis) which are operated by owners or managers who have sole letting rights to at least five flats, units or houses or by real estate agents for short-term letting. They are mainly self-contained in terms of cooking, bath (or shower) and toilet facilities and do not have breakfast available for guests. Data for holiday flats, units and houses include short-term owner occupation as well as paying guest occupation.

Visitor hostels which provide accommodation to visitors on a bed basis (rather than by the room). This category does not include establishments providing charity type accommodation (e.g. Salvation Army hostels) nor hotels, motels and guest houses without in-room facilities which provide accommodation on a per room basis.

- *Caravan parks* which provide either predominantly short-term (i.e. for periods of less than 2 months) or predominantly long-term (i.e. for periods of 2 months or more) accommodation to the general public and which provide powered sites for caravans and toilet, shower and laundry facilities for guests.

3 Data collected and published for each type of establishment (other than holiday flats, units and houses) include both long-term and short-term guests at these establishments.

4 Establishments which provide more than one type of accommodation (e.g. a motel with attached caravan park) are treated as two or more separate establishments. However, self-contained units, flats, cabins, etc. attached to hotels, motels or to caravan parks are included in the capacity for those establishments and not treated as separate holiday flat, unit or house establishments.

AUSTRALIAN STANDARD GEOGRAPHICAL CLASSIFICATION

5 Statistics presented in this publication have been classified according to the Australian Standard Geographic Classification (ASGC), Edition 2.4. This classification incorporates a number of hierarchic structures of geographic areas. The appropriate spatial units of the main structure of the ASGC used in this publication are defined as follows.

EXPLANATORY NOTES

AUSTRALIAN STANDARD
GEOGRAPHICAL CLASSIFICATION
continued

STATISTICAL LOCAL AREAS (SLAs) are legal Local Government Areas or parts thereof, which serve as the smallest type of spatial unit considered appropriate for the presentation of statistics and which add, without gaps or overlaps, to: STATISTICAL SUBDIVISIONS (SSDs) which in turn represent another, higher hierarchic level and add, without gaps or overlaps, to: STATISTICAL DIVISIONS (SDs) which in turn add, without gaps or overlaps, to: *Total Tasmania*.

For more detailed information, refer to the ASGC (1216.0).

UNPUBLISHED STATISTICS

6 The ABS may make available on request certain unpublished tourist accommodation statistics. A charge may be made for this information.

RELATED PUBLICATIONS

7 Publications for Australia, and each State and Territory, are released by the respective offices of the ABS. Tourist accommodation statistics for past quarters are available on request. Other ABS publications which may be of interest include:

- *Directory of Tourism Statistics*, 1991 (1130.0) (irregular)
- *Overseas Arrivals and Departures, Australia* (3401.0) (monthly)
- *Tourism Indicators, Australia* (8634.0) (quarterly)
- *Tourism Accommodation, Australia* (8635.0) (quarterly)

8 Current publications produced by the ABS are listed in the *Catalogue of Publications and Products* (1103.0). The ABS also issues the *Release Advice* (1105.0) on Tuesdays and Fridays which lists publications to be released in the next few days. Both the Catalogue and *Release Advice* are available from any ABS office.

SYMBOLS AND OTHER USAGES

n.a. not available
n.p. not available for publication but included in totals where applicable
r revised
.. not applicable
— nil
— break in continuity of the series (where drawn across a column between two consecutive figures)

9 Where figures have been rounded, discrepancies may occur between totals and the sums of the component items.

GLOSSARY

Average length of stay	<p>Average length of stay is expressed in numbers of days and calculated:</p> <ul style="list-style-type: none"> ▪ for hotels, motels and guest houses, by dividing <i>Guest nights</i> by <i>Guest arrivals</i> and ▪ for holiday flats, units and houses, by dividing <i>Unit nights occupied</i> by <i>Unit lettings</i>.
Bed spaces	Three-quarter beds are counted as one bed space; double beds as two bed spaces. Cots are excluded.
Capacity	Capacity in terms of <i>Guest rooms</i> , <i>Bed spaces</i> , <i>Holiday units</i> or <i>Caravan park sites</i> , etc. is the maximum number available to accommodate paying guests during the survey period. Capacity closed temporarily for seasonal reasons is included.
Caravan park capacity	The total number of <i>On-site vans</i> , <i>Other powered sites</i> , <i>Unpowered sites</i> and <i>Cabins</i> , etc.
Employment	The number of persons working at accommodation establishments at the end of the survey period (including working proprietors and those working on other than accommodation activities).
Establishments	For hotels, motels and guest houses, caravan parks and visitor hostels, the number of establishments within the scope of the survey which operated for any part of the survey period, or which closed temporarily for the quarter for seasonal reasons.
Guest arrivals	The total number of paying guests counted only on the first night they stayed at the accommodation establishment.
Letting entities	For holiday flats, units and houses, the number of owners, managers or real estate agents within the scope of the survey who operated for any part of the survey period.
Occupancy	<p>Occupancy in terms of <i>Room nights</i>, <i>Unit nights</i> or <i>Site nights occupied</i> refers to the total number of nights each guest room, holiday unit or caravan park site, etc. was occupied during the survey period. NOTE: From September quarter 1992, caravan park sites, etc. permanently reserved for 2 months or more at the end of the survey period but only casually occupied by their tenants have been recorded continuously as <i>Site nights occupied</i> irrespective of whether the tenants of individual sites were in residence on any particular night.</p> <p>Occupancy in terms of <i>Guest nights</i> refers to the total number of nights each paying guest stayed during the survey period.</p>
Occupancy rates	<p><i>Occupancy rates</i> represent occupancy expressed as a percentage of total capacity available during the survey period, e.g.</p>

$$\text{Room occupancy rate (\%)} \text{ for the period} = \frac{\text{Room nights occupied}}{(\text{Guest rooms}) \times (\text{No. of days in the period})} \times 100$$

providing that, for establishments closing (other than for seasonal reasons) or opening during the survey period, the denominator of the above expression includes only operating periods.

GLOSSARY

Other sites permanently reserved	The total number of powered and unpowered sites, on-site vans and cabins, etc. continuously let for 2 months or more by the end of the survey period to tenants who occupy the sites only on a casual or sporadic basis. Separate data for this item are available only from September quarter 1992.
Room nights available	The number of guest rooms available multiplied by the number of days for which they were available during the survey period. Includes operating periods only for establishments closing (other than for seasonal reasons) or opening during the survey period.
Sites occupied by long-term guests	The total number of sites, etc. occupied at the end of the survey period by guests who have stayed continuously for 2 months or more.
Star grading	The grading of hotels and motels with facilities based on the classification system used by members of the Australian Automobile Association (AAA). The gradings are allocated according to a points system based on the amenities and facilities available to guests. Details of the grading scheme are contained in the RACV-RAASA members' publication <i>Accommodation Australia</i> , or the individual tour guides produced by members of the AAA. For the purpose of classifying establishments to a star grading in this publication, 'half' star gradings are ignored (e.g. a two and a half star grading has been shown as two star).
Takings from accommodation	Revenue received from the provision of accommodation. Takings from meals are excluded. Takings from accommodation for each month generally represent the takings received during that month. Where payments are received in advance of, or after, the provision of accommodation to guests, the monthly figure for takings from accommodation may not necessarily bear a direct relationship to the number of guests accommodated during the month. Rental and storage fees paid to caravan parks for the keeping of private vans in parks are included in the takings of the month they are received.
Unit lettings	The total number of times a holiday flat, unit or house was occupied by a new tenant, counted only on the first night it was occupied by the new tenant.



FOR MORE INFORMATION

The ABS publishes a wide range of information on Australia's economic and social conditions. A catalogue of publications and products is available from any of our offices (see below).

INFORMATION CONSULTANCY SERVICES

Information tailored to special needs of clients can be obtained from the Information Consultancy Service available at ABS Offices (see below).

ABS PRODUCTS

A large number of ABS products is available from the ABS Bookshops (see below). The ABS also provides a subscription service – you can telephone the ABS Subscription Service Australia wide toll free on 1800 0206 08.

ELECTRONIC SERVICES

A large range of data is available via on-line services, diskette, magnetic tape, tape cartridge and CD ROM. For more details about our electronic data services, contact any ABS office (see below) or email us at:

Keylink STAT.INFO/ABS
X.400 (C:AU,A:TELMEMO,O:ABS,SN:INFO,FN:STAT)
Internet STAT.INFO@ABS. TELEMEMO.AU

You can visit us on the Internet at: <http://www.statistics.gov.au>

GENERAL SALES AND INQUIRIES

- * Sydney 02 268 4611 * Adelaide 08 237 7100
- * Melbourne 03 9615 7000 * Hobart 002 20 5800
- * Brisbane 07 3222 6351 * Darwin 089 43 2111
- * Perth 09 360 5140 * Canberra 06 252 6627

■ Information Services, ABS
PO Box 10, Belconnen ACT 2616



2863560006954

ISSN 0312-6900

RRP \$25.00

© Commonwealth of Australia 1995

Produced by the Australian Government Publishing Service